



# Assimilation Lighting of UmolaHorti LED



# Assimilation Lighting of tomato in 2018



- Assimilation Lighting with dedicated light spectrum to greenhouses cultivation has been installed and tested in one of the Dutch greenhouses in the Westland region in last quarter of 2018
- The lighting area was 400 m<sup>2</sup> and covered with light of approx. 150  $\mu\text{mol m}^2/\text{s}$  density



# Assimilation Lighting of tomato in 2018



- The control crop was carried out by using dedicated LED spectral light with reference to HPS lamps SON-T1000W (High pressure sodium lamps);
- The spectrum of light was developed for growth, flowering and fruiting;
- LED lamps powered by 750 wats have exchanged HPS lamps of 1050 wats in a 1:1 ratio;

# Assimilation Lighting of tomato in 2018



In close cooperation with the Dutch grower, we have created a high-power lighting device with the following characteristics:

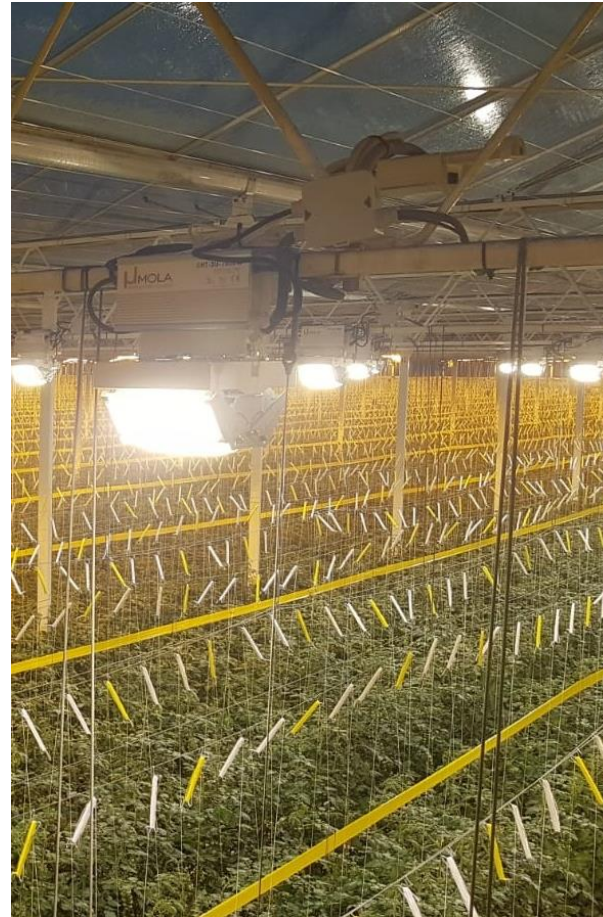
- High power LEDs from OSRAM
- Optimized spectrum for plant needs as well as it is friendly for human eyes
- Integrated fans that deliver heat towards the plants
- Outstanding light polar – high uniformity of light distribution over crops.
- Independent power steer-control depend on plant needs.



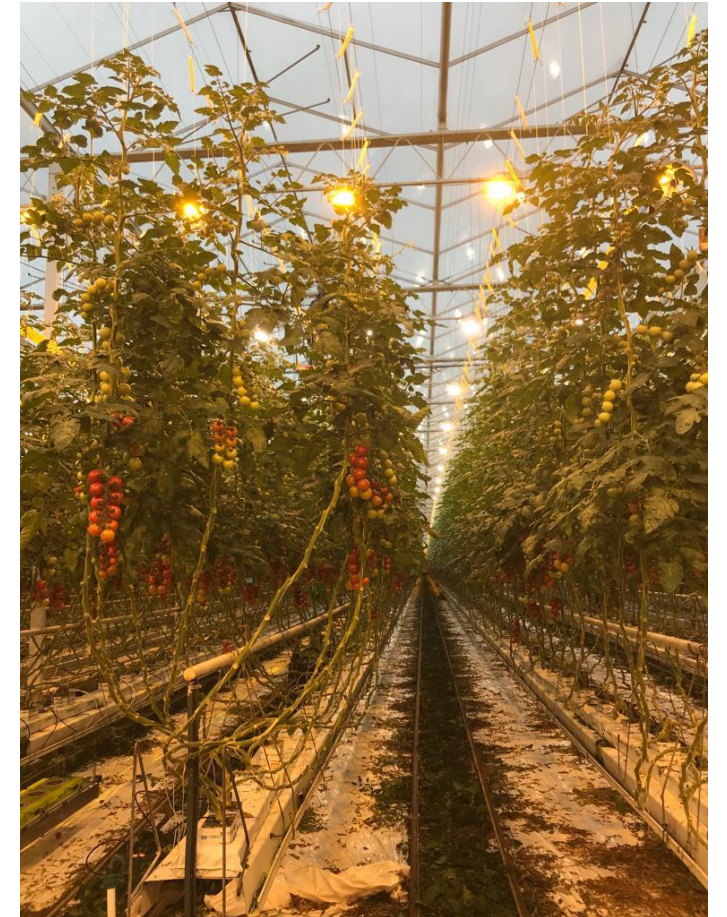


# Assimilation Lighting of tomato in 2018

**UHT-3U-750RW**



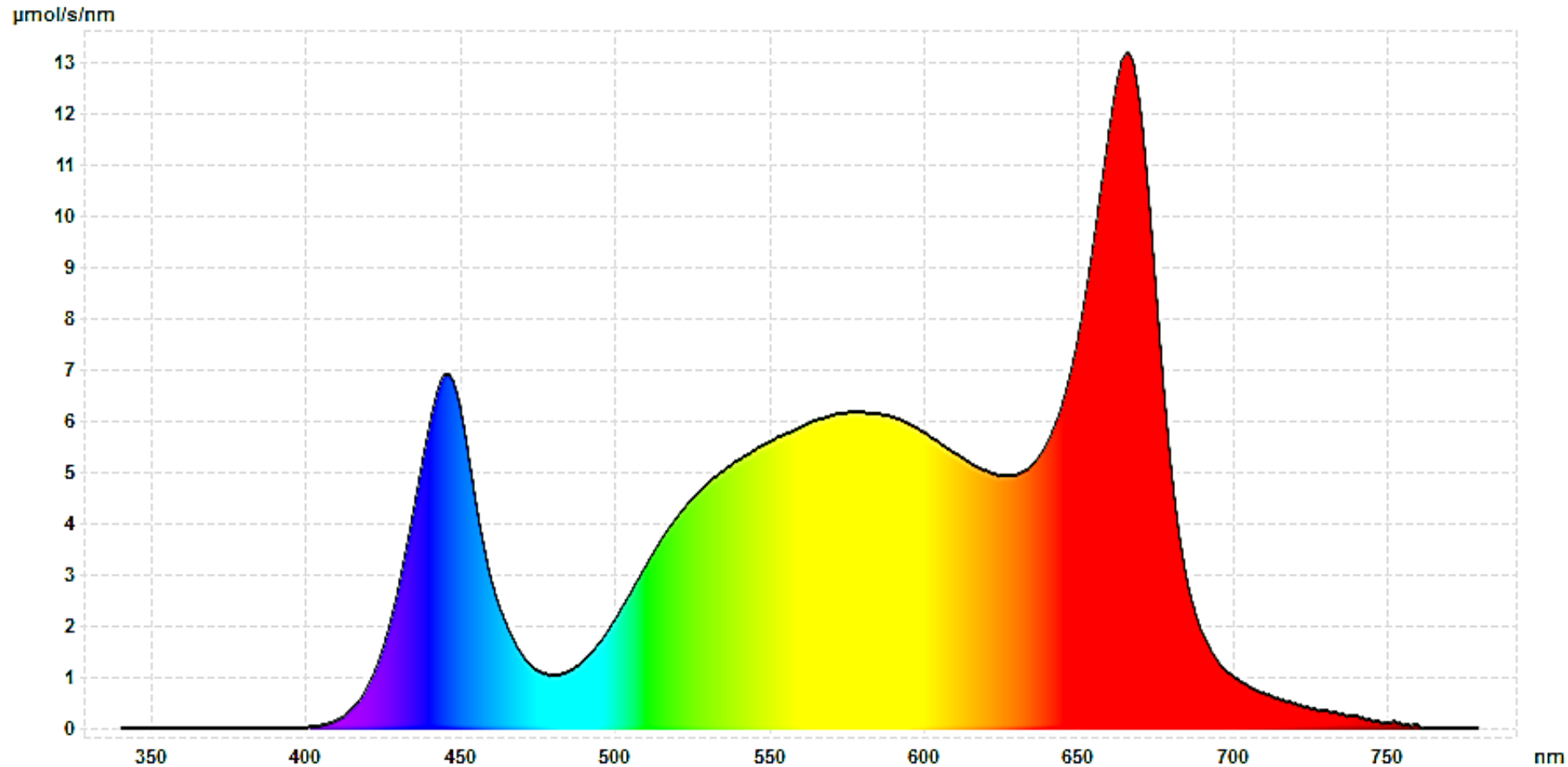
**SON-T 1000W**



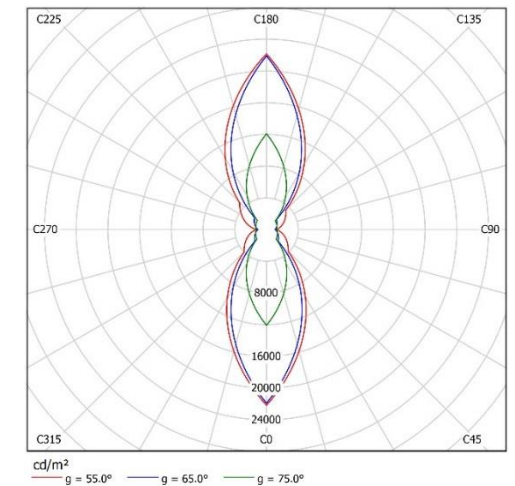
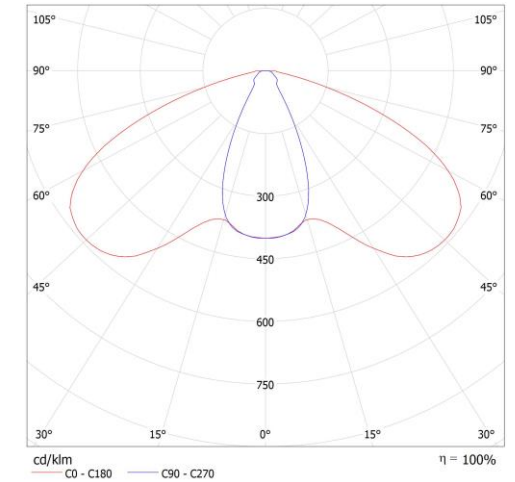


# Assimilation Lighting of tomato in 2018

## UHT-3U-750RW LIGHT SPECTRUM (umol/nm)



## POLAR DIAGRAM





[info@umola.pl](mailto:info@umola.pl)

+48 660 760 915

+48 604 639 576