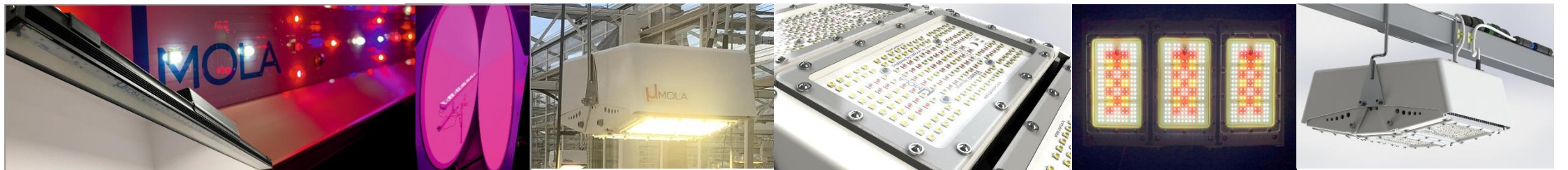




UMOLA

HORTICULTURE LED LIGHT

Assimilation Lighting of UmolaHorti LED

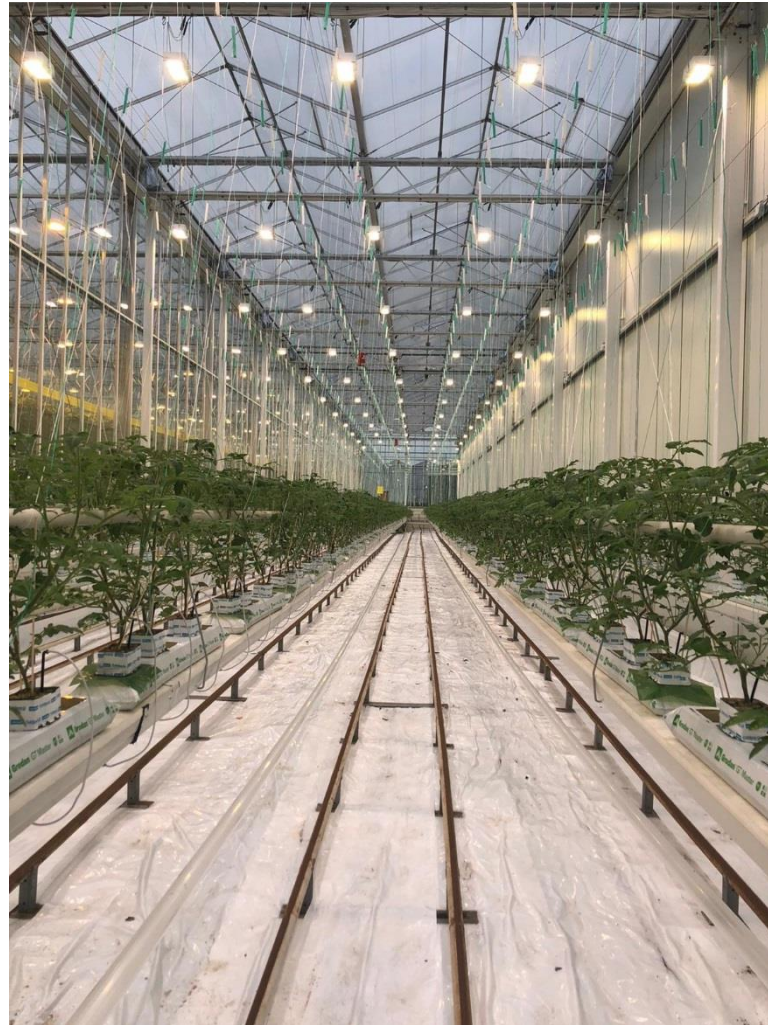
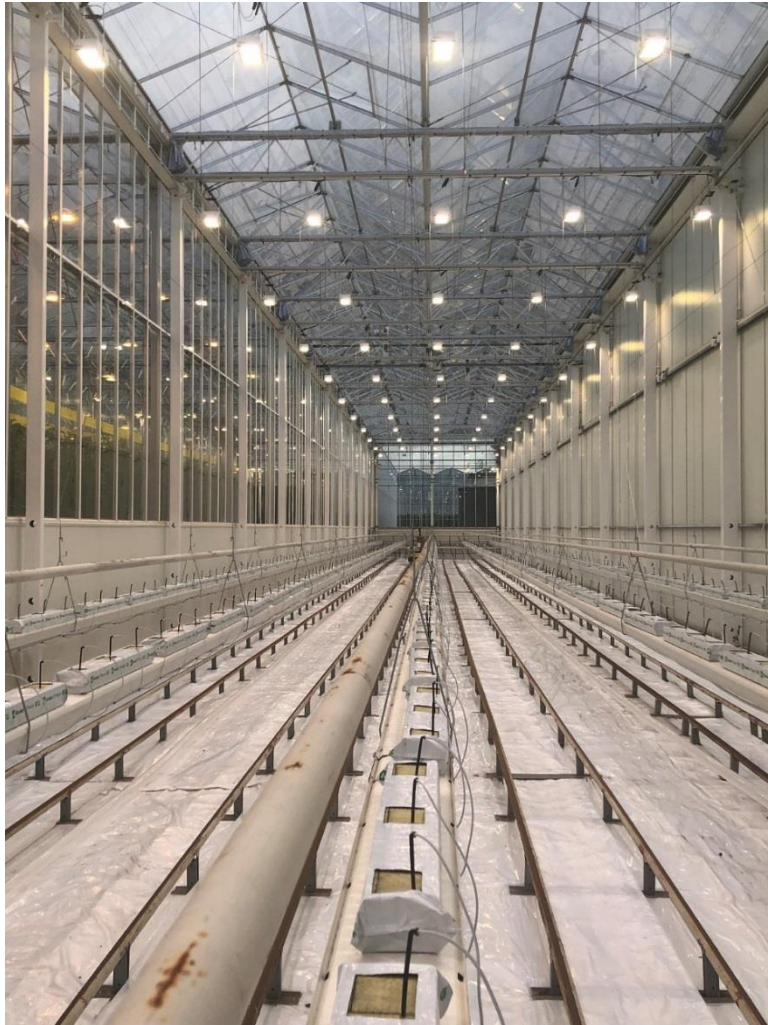


Assimilation Lighting of tomato in 2019

- At the beginning of October 2019, UMOLA produced and installed 70 LED lighting fixtures in cooperation with a Dutch gardener
- The control cultivation area was about 600 m² and was covered with light density of av. 230 $\mu\text{mol m}^2/\text{s}$
- A full-spectrum light was developed while ensuring the optimal amount of light energy from the 600-700nm range (red waves) at 58% of the total luminous flux.



Assimilation Lighting of tomato in 2019



MOLA
HORTICULTURE LED LIGHT

**LED LIGHTING SOLUTIONS
AT COMPETITIVE PRICES**

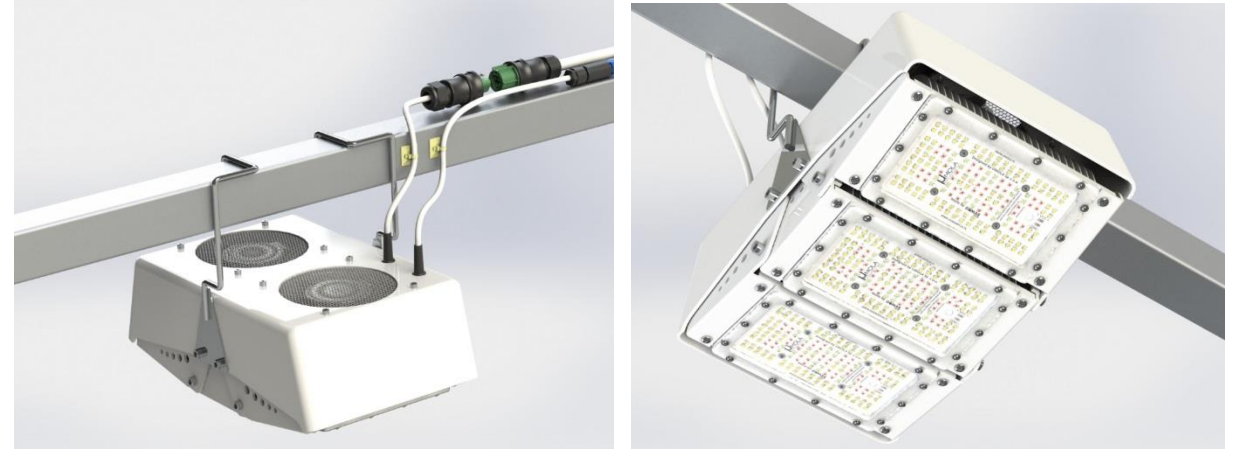
770 Watts; 1850 $\mu\text{mol}/\text{J}$

-  MAX ENERGY EFFICIENCY
-  SUPER WHITE FULL SPECTRUM
-  INDEPENDENT AIR FLOW
-  LIGHT POWER CONTROL
-  HIGH POWER IN SMALL SHAPE
-  GROWTH, FLOWERING, FRUITING

Assimilation Lighting of tomato in 2019

- Light spectrum adjusted to growth, flowering and fruiting phases,
- Adjustable luminous body depending on the type of the greenhouse and crops by using optics with different light distribution angles,
- Independent control of lighting power depending on the current needs of the plant,
- The power supply system to the entire system is placed out of the greenhouse and connected to a PRIVA climate computer,
- High coverage uniformity of up to 80%
- Passive and active cooling with thermal protector,
- Regulated thermal energy emission towards plants,
- The highest power in a small and light housing,
- The system adapted to the existing greenhouse installation,
- Designed and made in Poland.

UHT-3U-750RW



Colour temperature of UMOLA full-spectrum light vs typical HPS lighting



UHT-3U-750RW



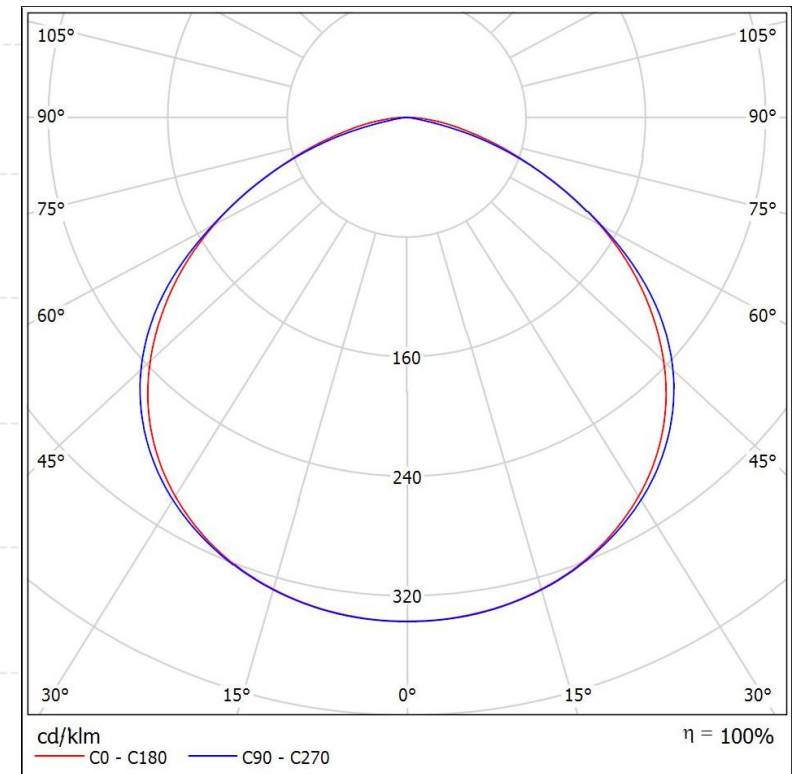
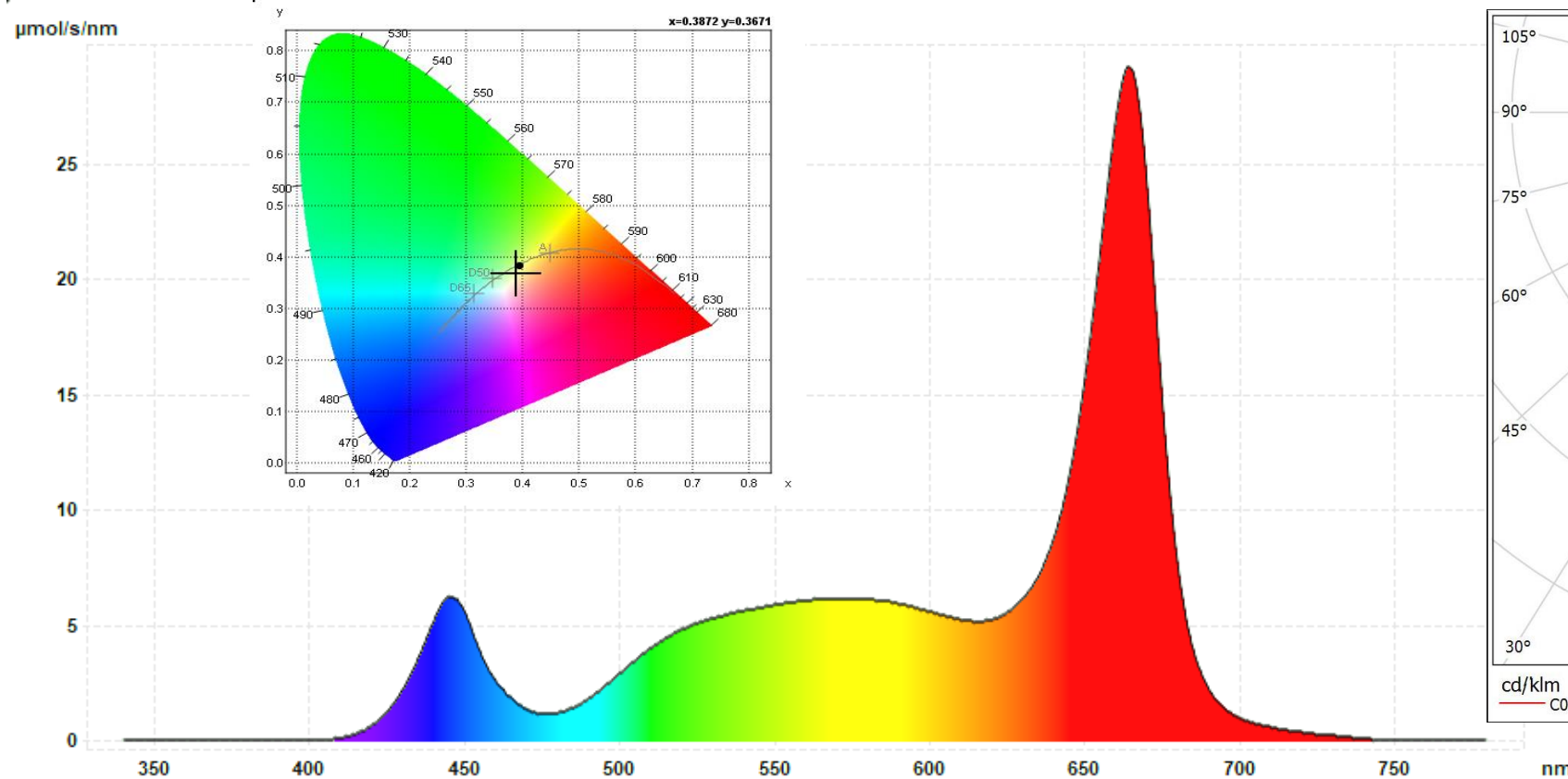
SON-T 1000W



Assimilation Lighting of tomato in 2019

UHT-3U-750RW FULL-SPECTRUM LIGHT ($\mu\text{mol}/\text{nm}$)

LIGHT SHAPE





info@umola.pl

+48 660 760 915

+48 604 639 576